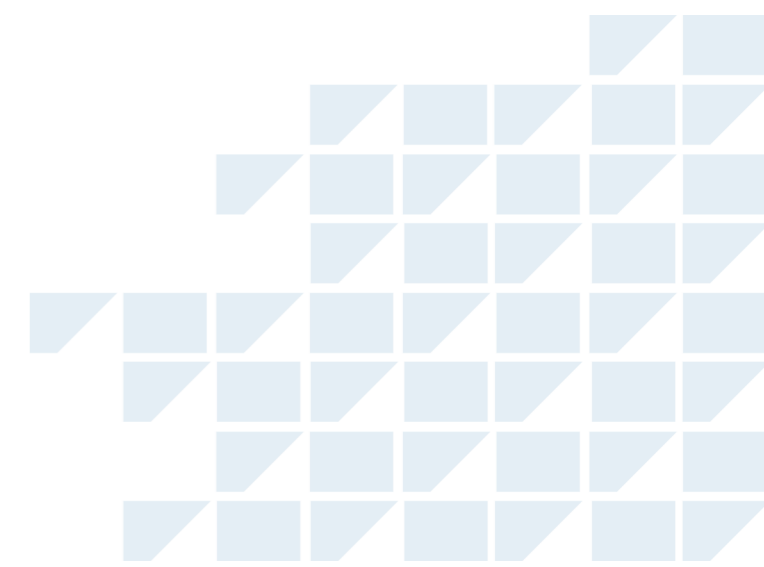




MAJOR PROJECTS

Bucharest Henri Coandă International Airport
&
Bucharest Băneasa Aurel Vlaicu International Airport

2025

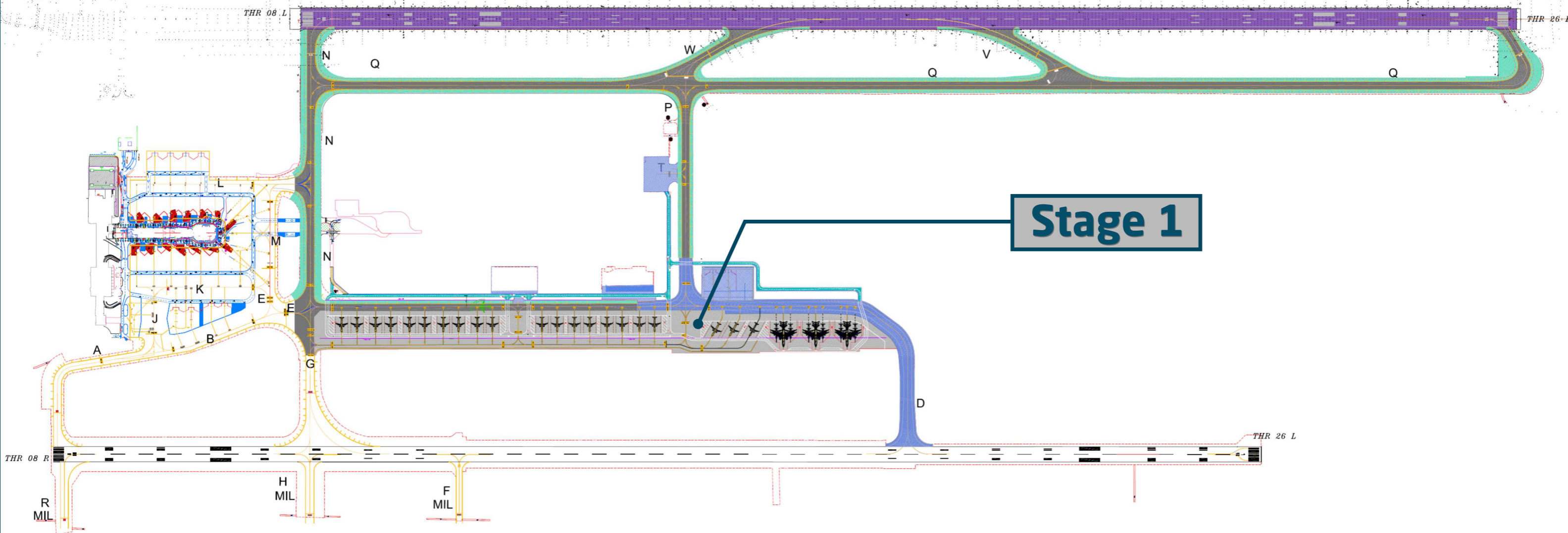


Systematization of Henri Coandă International Airport movement area in order to increase the operational capacity and ensure compliance with the provisions of Reg. 139/2014

Stage 1 [ONGOING]

- Road structure works, markings, sewerage and drainage, platform lighting for: Charlie, November, Papa, Quebec, Victor, Whiskey TWYs.
- Modernization of platform 2 - extension Eastwards to the Delta TWY demolition and full resurfacing of the existing surface.

Value: 66 M EUR



Systematization of Henri Coandă International Airport movement area in order to increase the operational capacity and ensure compliance with the provisions of Reg. 139/2014

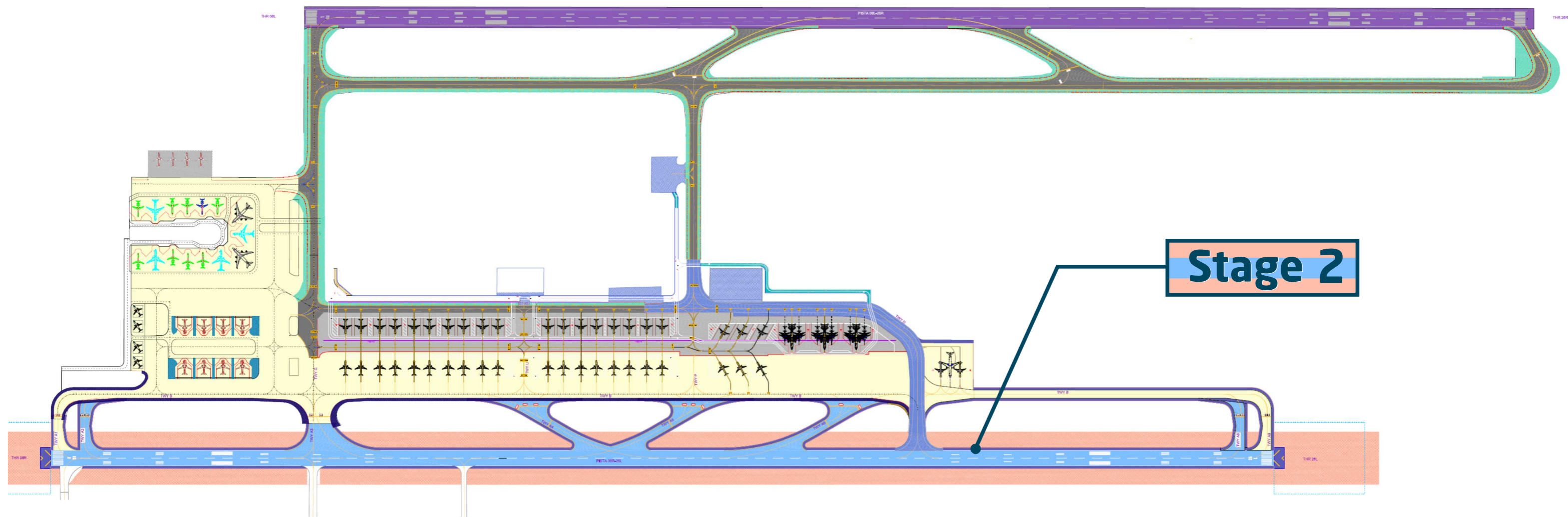
Stage 2

Modernization of RWY 08R-26L

The project will include the necessary works to modernize the road structure and markings, sewage and drainage installations, beaconing electrical installations for the following infrastructure elements:

- Modernization of RWY 1 (08R-26L) by demolition and full reconstruction, including the arrangement of runway safety areas
- New Alpha2, Alpha3, Alpha4, Alpha5, Alpha6, Alpha7, Alpha8 fast exit TWYs
- New Bravo fast exit TWY

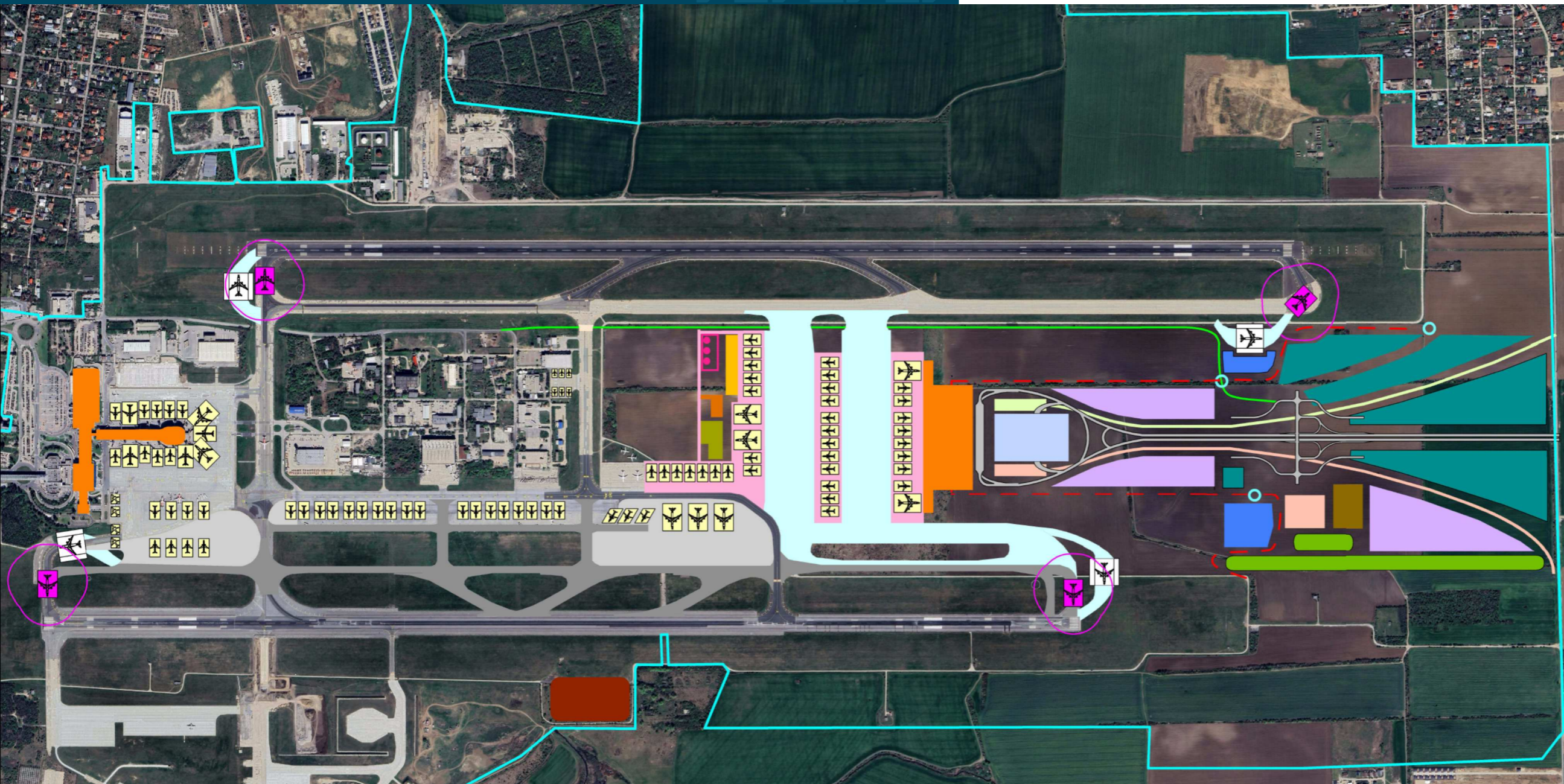
Value: 108M EUR



Strategic Program for the Infrastructure Development of Bucharest Henri Coanda International Airport

Phase 1

- 2.5 levels terminal
- 2 levels piers
- Gross Floor Area: 52,125m²
- 10 bridge stands for airplanes



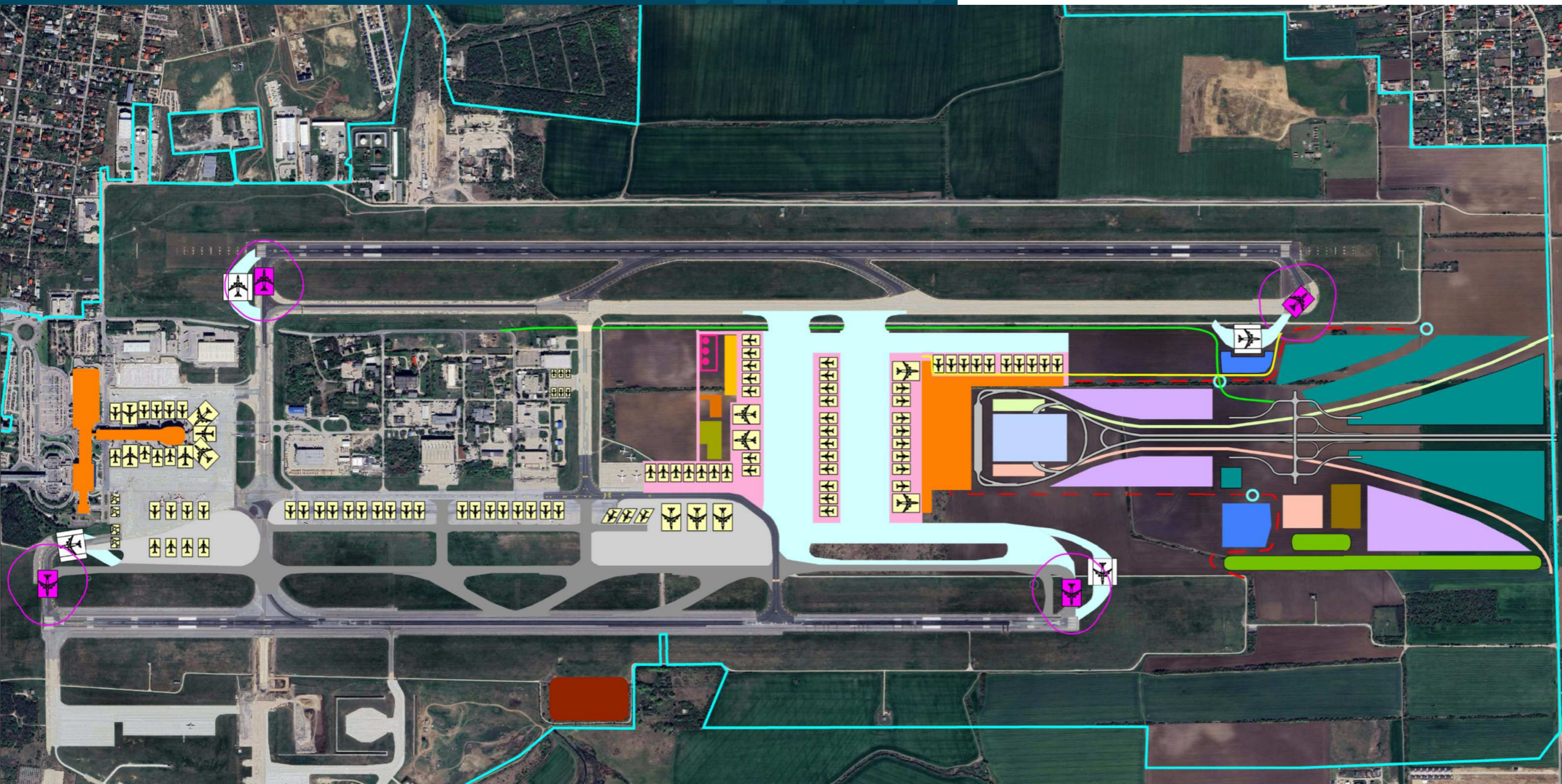
LEGEND

- New Taxiway
- New Apron
- Passenger Terminals
- Control Tower
- Fire Station (RFF)
- GSE Building
- Long Term Parking
- Short Term Parking Area
- Utilities / Technical
- Cargo Platform
- Sewage Treatment Plant
- GSE Staging Areas
- FATO
- Commercial
- Rail Station / Routing
- Metro Station / Routing
- Administration Area
- Isolated Stand Buffers
- - - Fencing
- Airside Landside Access
- Cargo Routing
- E/W Road Access
- Airport Land
- Cargo Road Access
- Fuel Storage / Dispenser

Strategic Program for the Infrastructure Development of Bucharest Henri Coanda International Airport

Phase 2

- Gross Floor Area: 175,348m².
- 20 bridge stands
- Car parking facilities
- Fully equipped landside and airside access roads
- Handling vehicles and equipment storage area
- Maintenance hangar for vehicles



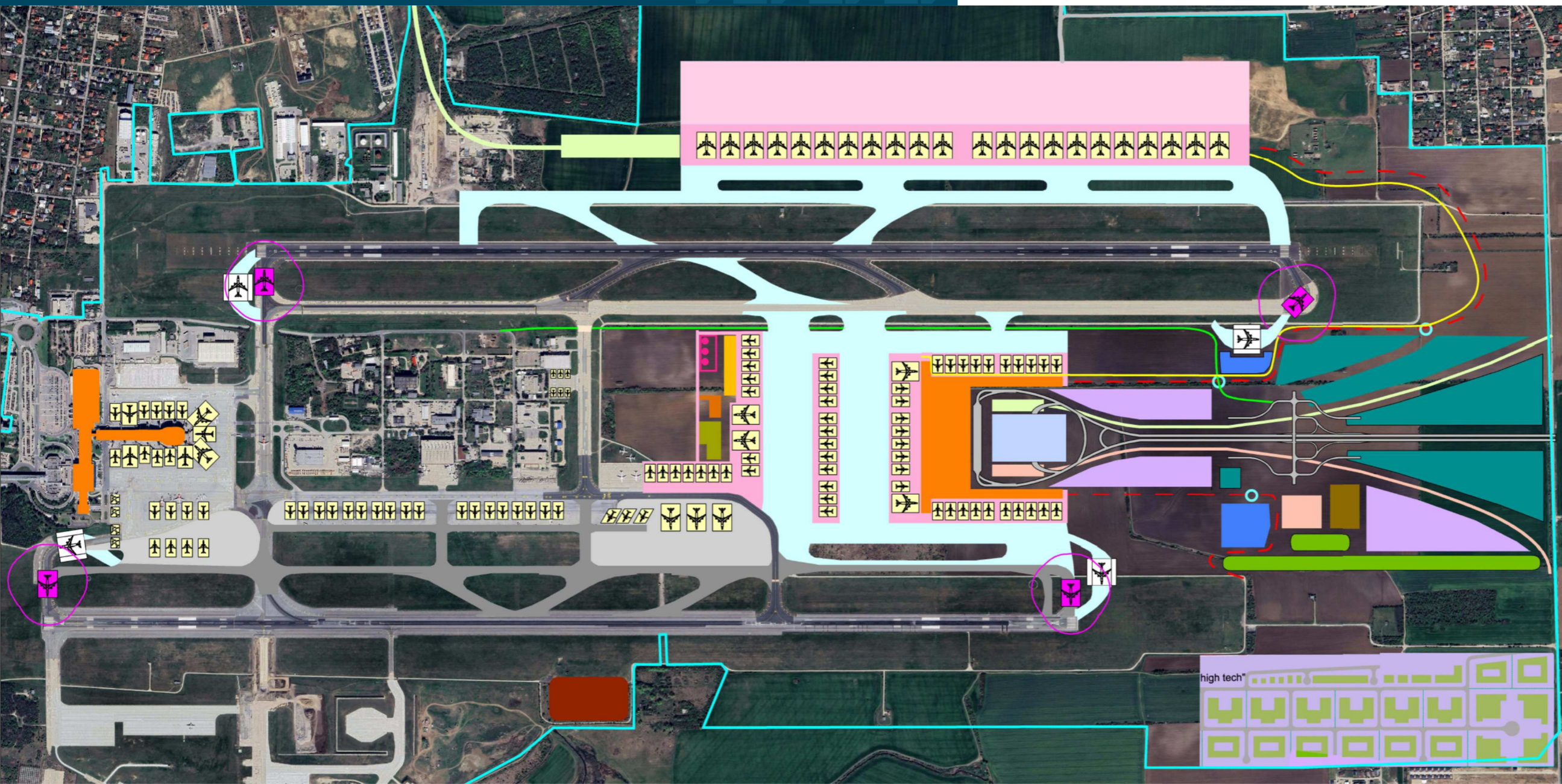
LEGEND

- New Taxiway
- New Apron
- Passenger Terminals
- Control Tower
- Fire Station (RFF)
- GSE Building
- Long Term Parking
- Short Term Parking Area
- Utilities / Technical
- Cargo Platform
- Sewage Treatment Plant
- GSE Staging Areas
- FATO
- Commercial
- Rail Station / Routing
- Metro Station / Routing
- Administration Area
- Isolated Stand Buffers
- - - Fencing
- Airside Landside Access
- Cargo Routing
- E/W Road Access
- Airport Land
- Cargo Road Access
- Fuel Storage / Dispenser

Strategic Program for the Infrastructure Development of Bucharest Henri Coanda International Airport

Phase 3

- Gross Floor Area: 195,396m²
- 30 contact stands
- Administrative building / airport services offices
- Thermal power plant
- Multi-Modal Cargo Platform
- High-tech Technological Park



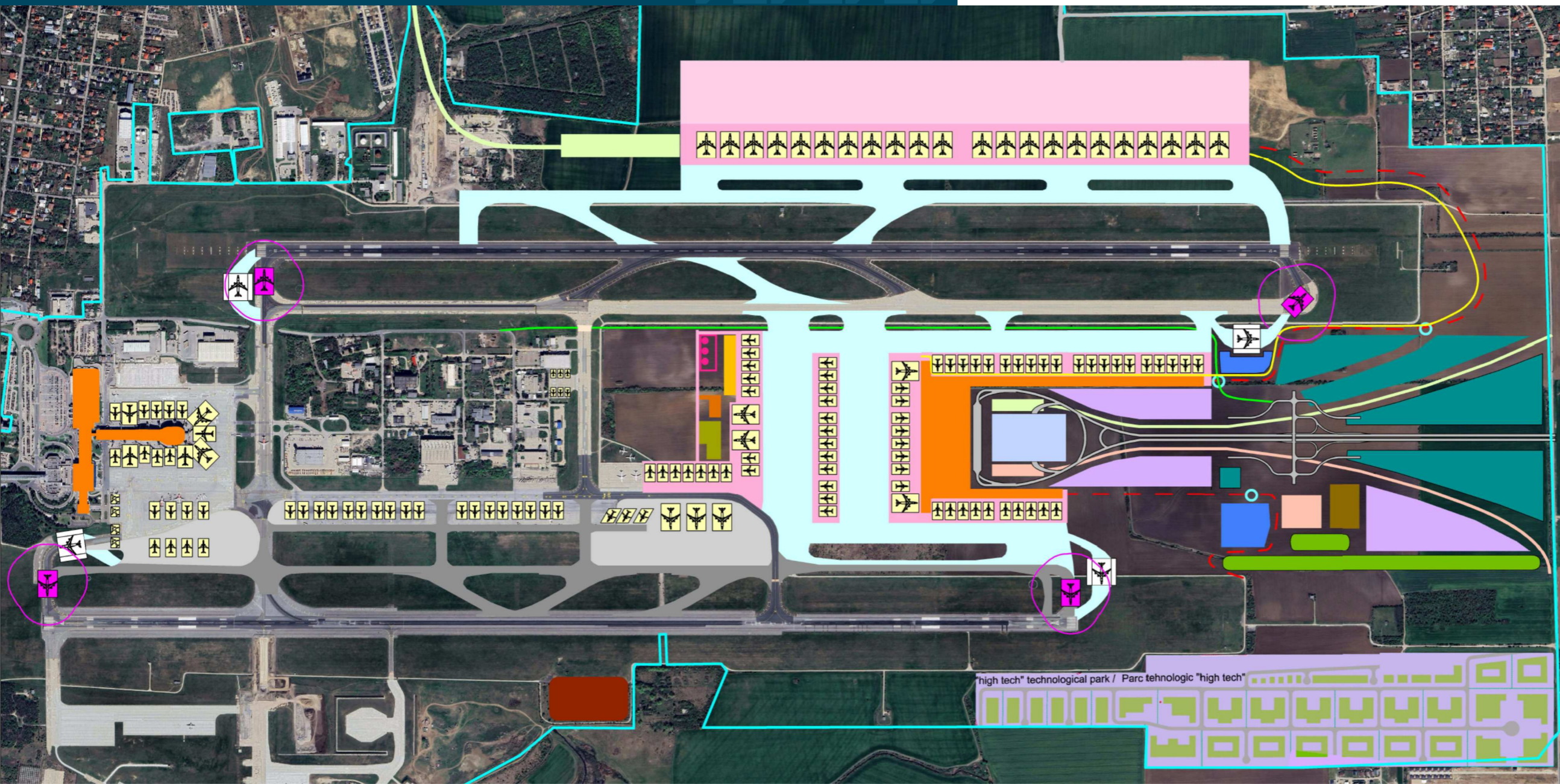
LEGEND

- New Taxiway
- New Apron
- Passenger Terminals
- Control Tower
- Fire Station (RFF)
- GSE Building
- Long Term Parking
- Short Term Parking Area
- Utilities / Technical
- Cargo Platform
- Sewage Treatment Plant
- GSE Staging Areas
- FATO
- Commercial
- Rail Station / Routing
- Metro Station / Routing
- Administration Area
- Isolated Stand Buffers
- Fencing
- Airside Landside Access
- Cargo Routing
- E/W Road Access
- Airport Land
- Cargo Road Access
- Fuel Storage / Dispenser

Strategic Program for the Infrastructure Development of Bucharest Henri Coanda International Airport

Phase 4

- Gross Floor Area: 216,847m²
- 40 bridge stands for airplanes
- Aircraft parking platforms
- Taxiway system (pavement structure, stormwater drainage, lighting, markings, and inscriptions)
- Landside and airside access roads



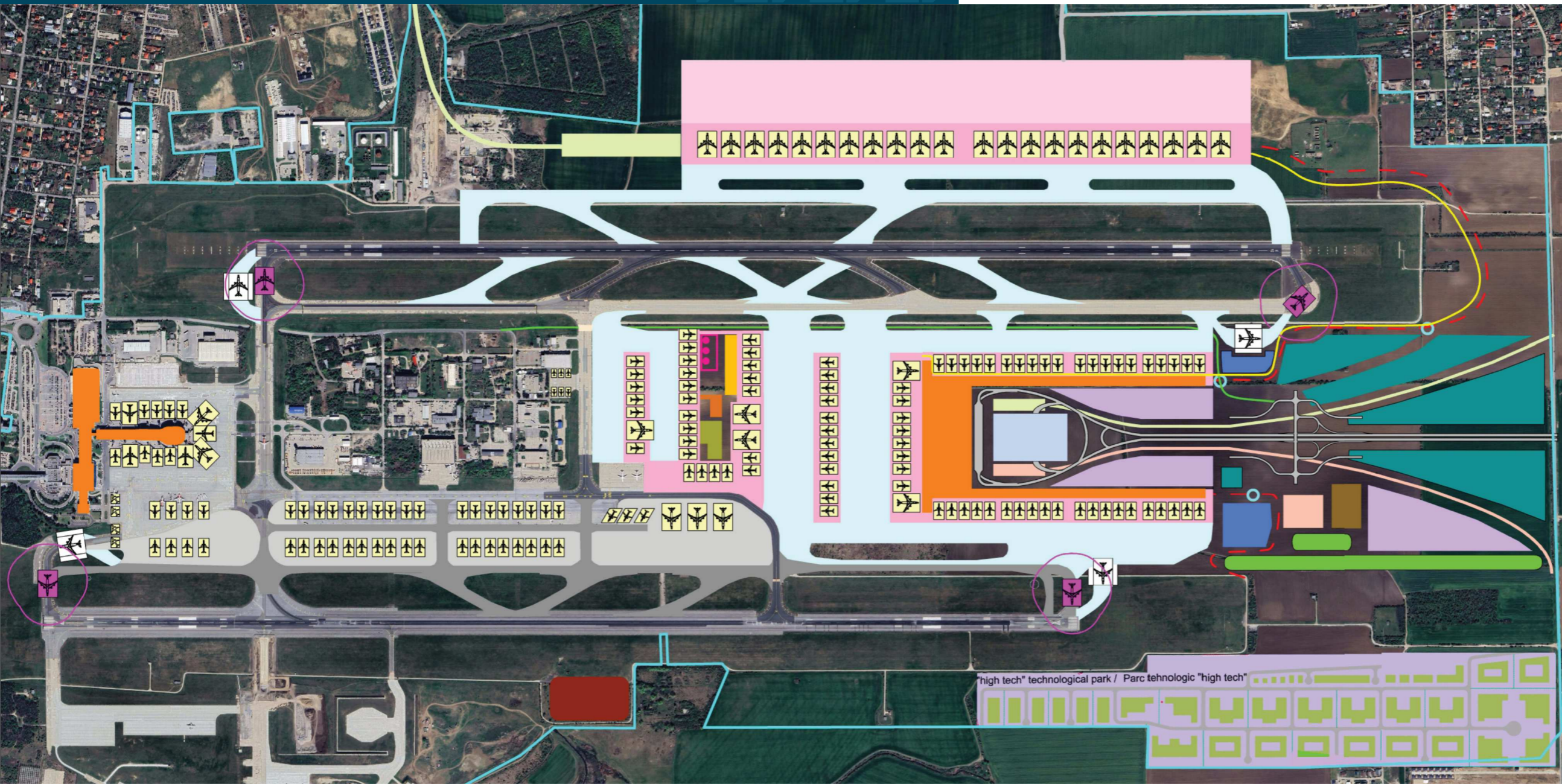
LEGEND

- New Taxiway
- New Apron
- Passenger Terminals
- Control Tower
- Fire Station (RFF)
- GSE Building
- Long Term Parking
- Short Term Parking Area
- Utilities / Technical
- Cargo Platform
- Sewage Treatment Plant
- GSE Staging Areas
- FATO
- Commercial
- Rail Station / Routing
- Metro Station / Routing
- Administration Area
- Isolated Stand Buffers
- - - Fencing
- Airside Landside Access
- Cargo Routing
- E/W Road Access
- Airport Land
- Cargo Road Access
- Fuel Storage / Dispenser

Strategic Program for the Infrastructure Development of Bucharest Henri Coanda International Airport

Phase 5

- Gross Floor Area: 238,298m²
- 50 bridge stands for airplanes
- Administrative ATS building and control tower
- Integration with road and rail transport network projects for access to the new infrastructure
- Car parking facilities
- Fire station



LEGEND

- New Taxiway
- New Apron
- Passenger Terminals
- Control Tower
- Fire Station (RFF)
- GSE Building
- Long Term Parking
- Short Term Parking Area
- Utilities / Technical
- Cargo Platform
- Sewage Treatment Plant
- GSE Staging Areas
- FATO
- Commercial
- Rail Station / Routing
- Metro Station / Routing
- Administration Area
- Isolated Stand Buffers
- Fencing
- Airside Landside Access
- Cargo Routing
- E/W Road Access
- Airport Land
- Cargo Road Access
- Fuel Storage / Dispenser

Strategic Program for the Infrastructure Development of Bucharest Henri Coandă International Airport

[Main Objectives]

- Gross Floor Area: 238,298m²
- New passenger terminal: approx. 176,000 sqm - with complete services
- New aircraft parking stands: 48
- New boarding bridge stands: 20
- Fully equipped aircraft parking platforms
- Fully equipped taxiway system
- Fully equipped landside and airside access roads
- Integration with road and rail transport network projects for access to the new infrastructure
- Car parking facilities
- Administrative building / airport services offices
- Maintenance hangar for vehicles
- Handling equipment storage area
- Fire station
- Electrical transformation stations
- External electrical networks
- Handling vehicles and equipment
- Operating staff facility building
- Wastewater treatment solutions
- Stormwater drainage networks, including pumping stations
- Sanitary sewer networks, including pumping stations
- Water supply networks, including pumping stations
- Thermal power plant
- Aircraft electrical power supply
- Administrative ATS building and control tower
- Infrastructure-related constructions (manholes, pumping stations, equipment foundations and platforms, metal scaffolding, etc.)

Stage 1

Value: 1.4 B EUR

| Description | Unit | Quantity |
|---|----------------|----------|
| Passenger Terminal Full Service Carriers | m ² | 155,300 |
| Taxiway System | m ² | 414,507 |
| Landside Road System | m ² | 106,990 |
| Passenger Terminal Low Cost Carriers | m ² | 20,048 |
| Parking Multi Storey | m ² | 77,269 |
| Apron | m ² | 254,778 |
| Surface Water Drainage | Unit | 1 |
| It&t Backbone | Unit | 2% |
| Blast Pads & Connections | m ² | 69,393 |
| ATC Tower | Unit | 1 |
| Parking At Grade | m ² | 114,753 |
| Technical Center | Unit | 1 |
| Sewage Treatment Plant (additional modules) | Unit | 1 |
| Social Block | m ² | 1,500 |
| Administration Building | m ² | 5,000 |
| Vehicle Maintenance | m ² | 2,400 |

Stage 2

| Description | Unit | Quantity |
|--------------------------------------|----------------|----------|
| Passenger Terminal Low Cost Carriers | m ² | 20,048 |
| Landside Road System | m ² | 18,881 |
| Parking Multi Storey | m ² | 16,956 |
| Apron | m ² | 37,078 |



A P O C (Airport Operational Centre)

APOC (AirPort Operations Centre) is a coordination arrangement at an airport, whereby operational stakeholders (actors) collaborate for the effective/efficient establishment and execution of an agreed operational plan, in a structured manner with agreed processes, either through physical or virtual interaction or a combination thereof.

Acquisition of software, hardware equipment and integrated infrastructure

- **Airport Operational Database** - facilitates the storage, management and distribution of critical operational information related to flights, aircraft, passengers and crews.
- **Resource Management System** - planning and automatically allocating resources such as boarding gates, aircraft parking stands, check-in counters, baggage carousels, transfer buses, based on the flight schedule and requirements.
- **Airport Collaborative Decision-Making** - enhancing airport turnaround and foster collaboration.
- **Reporting/communication software/applications** - generating operational reports and analyses, necessary for performance evaluation and decision-making.
- **Passenger information application/airport guide** - improving the travel experience and easily accessing essential details and receive assistance during transit through the airport.

Value: 6.5M EUR

APOC
AIRPORT OPERATIONS CENTER



Strategic Program for the Infrastructure Development of Bucharest Băneasa - Aurel Vlaicu International Airport 2025 - 2035



Main Objectives

BUCHAREST AIRPORTS®

- **Modernization and increasing** the current passenger terminal operational capacity (from 600 to at least 800 passengers/peak hour);
- **Development of a new passenger terminal** with a minimum capacity of 800 passengers/hour at peak times, with access to platforms, runway, and taxiway system; the options for developing the new terminal are either within the airport perimeter or by acquiring properties in its vicinity;
- **Modernization of the airside and development of new landside areas** (access roads, public parking technical areas);
- **Hangar dedicated to general aviation;**
- **Reducing the impact of noise** on the community in the immediate vicinity of the airport.

DEVELOPMENT PLAN Bucharest Băneasa Aurel-Vlaicu International Airport



LEGEND

| | |
|--|----------------------------------|
| | ACTUAL LIMIT |
| | AIRPORT DEVELOPMENT AREA |
| | ADMINISTRATIVE TERRITORIAL LIMIT |
| | AERONAUTICAL EASMENTS |





Two fields. One team. United.

